



FARNHAM ROAD, BRADFORD, WEST YORKSHIRE BD7 3JG
Telephone: +44 (0) 7899 998277
Email: sales@tatham-uk.com

=====
QUOTATION
=====

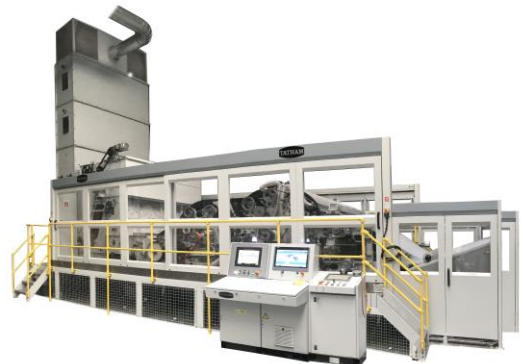
Spinnbau Quotation

1 - Spinnbau Double Doffer Nonwoven Card 2500mm (Ref. 13039)

Re-conditioned by TATHAM

Card specification

- 2500mm working width
- Dish feed arrangement with Feed roller 159mm
- 1 licker-in 292mm
- 1 Breast 412mm with 1 worker 213mm and 1 stripper 105mm
- 1 Transfer 412mm
- 1 Swift 1500mm with 6 workers 213mm and 6 strippers 105mm
- 1 Top Doffer 550mm
- 1 Bottom Doffer 550mm
- 2 Top Randomiser rollers 292mm
- 2 Bottom Randomiser rollers 292mm
- Top Doffer doffing roller system
(2 roller 105mm & 105mm)
- Bottom Doffer doffing roller system
(2 roller 105mm & 105mm)
- Card mounted on rails with platform
- Spinnbau guarding system
- CE Conformity



Fitted with the following new equipment :

- New high capacity hopper feeder with chute delivery
- Electronic Weigh System "TS MicroFeed"
- New AC Inverter drive system with touch screen control
- New AC geared motor units
- New drive belts as required
- New safety circuit, E-stops and guard interlocks
- Including machine refurbishment and re-paint to RAL 7035 (light grey)

PRICE: (Incoterms Ex-works, Bradford)
(Excluding loading)

Optional items

The following items are excluded, subject to further discussion, technical specification and site layout;

- Metallic Card wire
- Dust fan & Filter unit
- Feed tower

TECHNICAL SPECIFICATION



FARNHAM ROAD, BRADFORD, WEST YORKSHIRE BD7 3JG
Telephone: +44 (0) 7899 998277
Email: sales@tatham-uk.com

=====
QUOTATION
=====

Spinnbau Quotation

HOPPER FEEDER with chute delivery

2500mm wide

1500mm feeder conveyor PVC with wood laths with geared motor drive

Inclined spiked lattice PVC with wood laths with geared motor drive

Levelling roller with geared motor drive

Stripping roller with geared motor drive

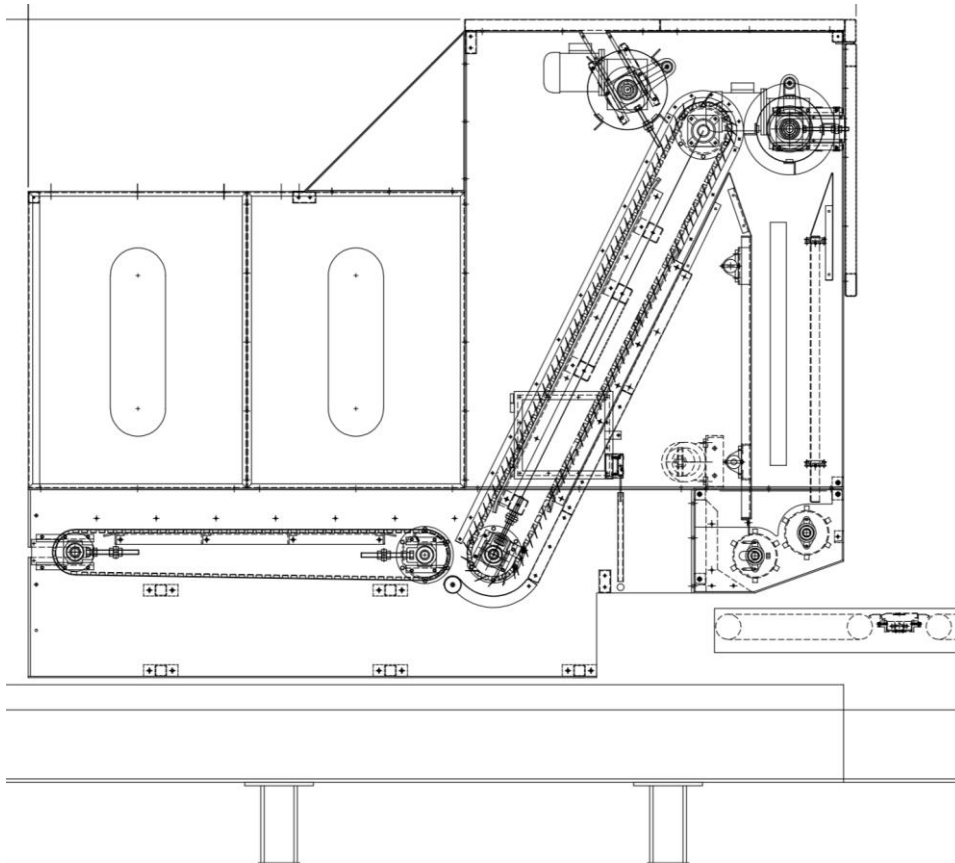
Volumetric chute delivery

Vibrating backplate with geared motor drive

Chute thickness adjustable

Delivery rollers to be driven from Card feed sheet

Electrical controls with variable speed drives to Spiked lattice, Levelling/Stripping rollers and vibrating backplate



ELECTRONIC WEIGHT CONTROL SYSTEM

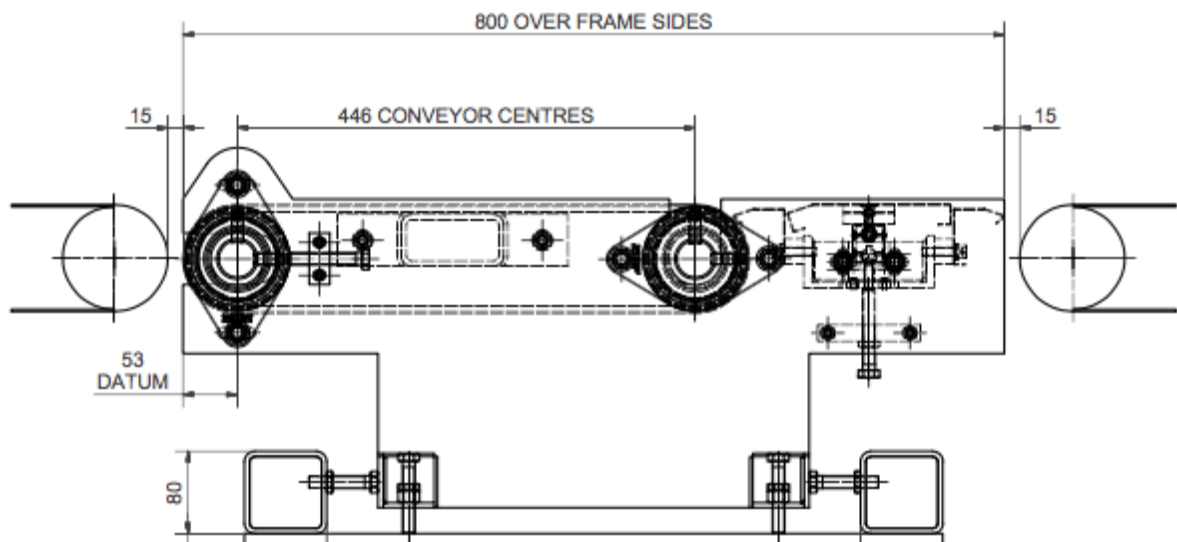


FARNHAM ROAD, BRADFORD, WEST YORKSHIRE BD7 3JG
Telephone: +44 (0) 7899 998277
Email: sales@tatham-uk.com

=====
QUOTATION
=====

Spinnbau Quotation

- Model – TS Microfeed
- New **TS Series** Control System to monitor and control fibre delivery
- Incorporating the latest intelligent logic control technology.
- User-friendly operator Interface with TFT Touch Screen Control for all settings and parameters.
- 'Auto set weight' routine to calculate the optimum settings to maintain final production weight
- Control panel to house all electrical equipment
- Graphical production information. Animated cycle Status Graphics and Real Time Event Logging
- Live on screen Diagnostics
- Audio/visual alarm indicates over/under weight condition
- Simple calibration procedure.
- On-screen assistant to offer help on settings
- Industry standard Protocols.
- AC variable speed drive to Spiked lattice and feed geared motors
- Lightweight Conveyor Assembly with Weigh plate sensor.
 - New feedsheet assembly incorporating lightweight weighplate and conveyor
 - Digital Loadcell span amplifier with LCD display
 - Matched pair of strain gauge Loadcells.
 - Digital transducer fitted to feed sheet for weigh block position.
 - Digital transducer fitted to doffer for line ramp



SPINNBAU NONWOVEN DOUBLE DOFFER CARD Card specification



FARNHAM ROAD, BRADFORD, WEST YORKSHIRE BD7 3JG
 Telephone: +44 (0) 7899 998277
 Email: sales@tatham-uk.com

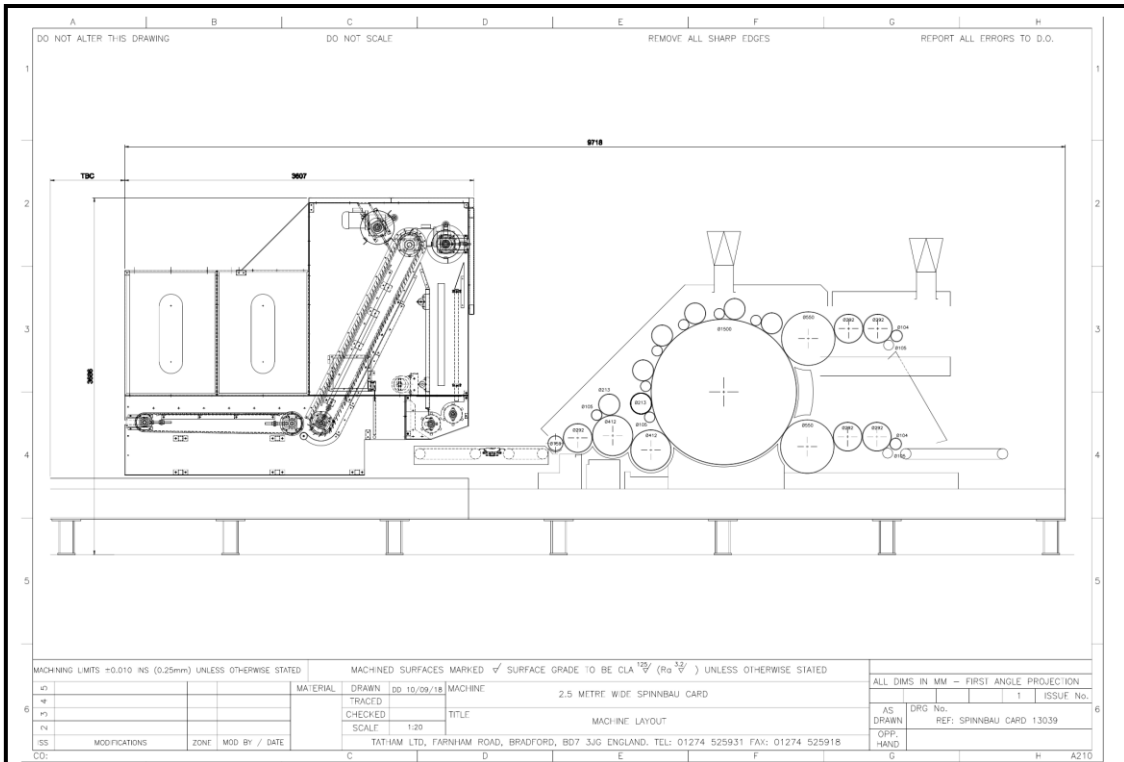
=====

QUOTATION

=====

Spinnbau Quotation

- 2500mm wide
- Dish feed arrangement with Feed roller 159mm
- 1 licker-in 292mm
- 1 Breast 412mm with 1 worker 213mm and 1 stripper 105mm
- 1 Transfer 412mm
- 1 Swift 1500mm with 6 workers 213mm and 6 strippers 105mm
- 1 Top Doffer 550mm
- 1 Bottom Doffer 550mm
- 2 Top Randomiser rollers 292mm
- 2 Bottom Randomiser rollers 292mm
- Top Doffer doffing roller system (2 roller 105mm & 105mm)
- Bottom Doffer doffing roller system (2 roller 105mm & 105mm)
- Card mounted on rails with platform and guarding
- CE Conformity





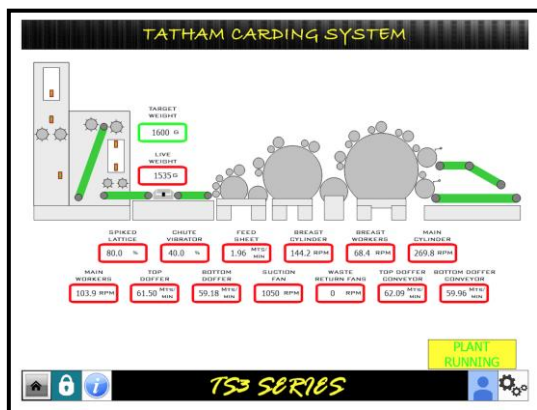
FARNHAM ROAD, BRADFORD, WEST YORKSHIRE BD7 3JG
 Telephone: +44 (0) 7899 998277
 Email: sales@tatham-uk.com

=====

QUOTATION

=====

Spinnbau Quotation
 Supply voltage 415v 3ph 50hz
 Control voltage 24v DC



Floor Standing Control Panel wired the following equipment:-

Hopper

1 – Fused supply for new TS Microfeed

Main Drive - 1 – 18.5Kw AC controller

Worker Drive - 1 – 2.2kw AC controller

Doffer Drive - 2 – 4Kw AC controller

Randomiser Drive – 2 – 1.5Kw AC controller

All contactors and necessary overload devices for above

Above drive sizes to be confirmed.

Guards (to incorporate existing safety system) 1 - Set of control relays

Guard controls - 1 – 0.55 Kw Dol starter c/w Mcb

Complete safety circuit

All above machinery drives are fitted with

- DTC Inverter
 - EMC/RFI Filter, Cat C3, 2nd Env, Earthed Network E200
 - ACS-CP-U Control panel in the unit
 - *Controls* –TS control technology
- Fully synchronised speed control facility even at low speeds - Excellent motor control algorithm provides precise torque performance and speed regulation, offering complete synchronization without any feed back devices.



FARNHAM ROAD, BRADFORD, WEST YORKSHIRE BD7 3JG
Telephone: +44 (0) 7899 998277
Email: sales@tatham-uk.com

=====
QUOTATION
=====

Spinnbau Quotation

PLC

High functionality PLC
Simple program upload via SD Card
Easily expandable

Programmable E-stop Safety circuit

MAIN OPERATOR CONTROL DESK

15" TFT Colour touchscreen incorporating all the necessary speed adjustments and speed indicators
Line start/stop/E-stop/Re-set pushbutton mounted on desk



Complete Fault Diagnostic System including the ability to display information between the drives complete with adjustment and warning facility
System will be password protected, levels of protection to be discussed

REMOTE SERVICE

*Ewon hub providing remote diagnostic support from Tatham service centre.
Customer to provide Ethernet (LAN) cone

MOTORS AND GEARBOXES

All motors are cooled in accordance with BS EN 60034-6. The normal arrangement is IC411 (Total Enclosed Fan Ventilated) via a fan mounted at the non-drive end.

Main Drive - 1 – 18.5Kw AC Geared Motor unit
Doffer Drive - 2 – 4Kw AC Geared Motor units
Worker Drive – 1 – 1.5 Kw AC Geared Motor unit
Randomiser Drive – 2 – 1.5KW AC geared motor units

New baseplates, fixings and belt/pulleys for above
Sizes to be confirmed

TERMS OF BUSINESS

Excluding;

- All civil work including site preparation/foundations
- Mains supply to Control panel and connection



FARNHAM ROAD, BRADFORD, WEST YORKSHIRE BD7 3JG
Telephone: +44 (0) 7899 998277
Email: sales@tatham-uk.com

=====
QUOTATION
=====

Spinnbau Quotation

- The wiring material and labour required for the electrical connection of the machine/devices as well as the wiring material and labour between the control cabinet and the machines/devices is not included in our price
- Compressed air connections, both labour and materials.
- Ductwork connections to & from processing line
- Any guarding modification as may be required to suit mill layout
- Loading, Transport, Unloading and installation.
- All installation team's expenses, travel etc

TERMS OF PAYMENT

40% deposit with order
50% payable on notification that goods are ready for dispatch
10% 30 days after installation

DELIVERY

12-16 weeks from receipt of deposit and all technical details

WARRANTY

All equipment supplied covered by a standard manufacturers warranty for 12 months. Excluding any parts which are subject to normal wear.

DOCUMENTATION

All relevant documentation will be issued on completion of the installation including

- Operation manual
- Electrical drawing
- Declaration of conformity

STANDARDS AND REGULATIONS

The equipment offered conform with;

- The machinery directive 2006/42/EC (Supply of Machinery (safety) Regulations 2008) and are subject to the following standards and regulations;
- Low voltage Directive 2006/95/EC (Electrical Equipment (Safety) Regulations 1994
- Electromagnetic Compatibility Directives 2004/108/EC (Electromagnetic Compatibility Regulations 2006)

All equipment is subject to CE marking and strict safety regulations which ensures that operatives are unable to access dangerous moving parts whilst the machine is in motion

Generally in accordance with our standard Terms and Conditions of Estimate.